



Colorproof™

PROOFING SOLUTIONS WITH BEST TECHNOLOGY



Powerful  
Flexible  
Accurate

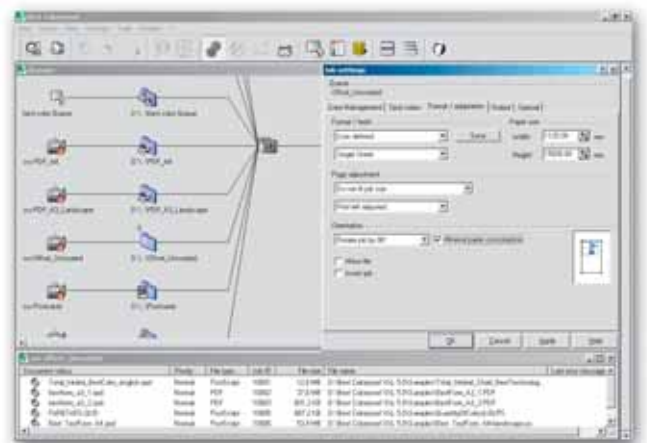
# Powerful Proofing Package



## EFI Colorproof™

EFI Colorproof with BestTechnology transforms your inkjet or laser printer into a powerful digital proofing system. A good proofing system is one of the most important components in any printing process. Even when a print job is still at the concept stage, a true color proof can be produced, serving to represent the job until the final print is produced. Thus, acting as the basis for agreement between customer, agency and print shop.

For many years, the proofing stage of the printing process was dominated by inflexible and expensive systems. Today, however, inexpensive, versatile inkjet and laser printing systems are the state of the art, controlled by intelligent color management software. So step into the future and put your faith in the pioneer of inkjet and laser proofing technology. Rely on EFI Proofing Solutions with BestTechnology.



Up to 15 queues with individual settings

### Winning Concept

EFI Colorproof with BestTechnology is a complete package made up of components that you typically have to buy separately if you go elsewhere:

Using Adobe PostScript 3™, our system is based on RIP technology from the inventor of PostScript. This enables EFI Colorproof to support multiple file formats and offers you unrestricted compatibility with all leading layout and graphics applications.

This is supplemented by a powerful color management module. Based on the widely recognized and proven ICC standard, this module ensures that proof colors match perfectly with the subsequent printed results.

Comprehensive workflow functions let you integrate the system seamlessly into your production environment. You can connect up to 15 different input channels configured with color and quality settings for a variety of different printing processes. You can make each of these input channels visible on the network as hot folders or virtual printers. As soon as a file is transferred, the proofing system automatically starts to work.

Additional production functions such as scaling, rotating, cropping, nesting and tiling also make EFI Colorproof highly applicable for production, exhibition design and event management applications.

EFI provides you with every important component you need for the perfect digital proofing system, known as the "4 Cs of successful proofing".



## The 4 Cs of Successful Proofing

**Calibration** means setting up the attached printer in a predefined state – the decisive factor in producing stable and high quality digital proofs. A powerful LinTool is a fundamental part of EFI Colorproof. It will keep your printer's color constant for many years.

The easy-to-use operation means that almost anyone can linearize a printer quickly and accurately. Measuring devices supported include: Best Eye, EFI-ES-1000, X-Rite DTP 41(T), Gretag Macbeth Eye One and Gretag Macbeth Spectroscan. EFI LinTool also lets you align colors visually, without the use of a measuring device.

**Characterization** is the next step on the way to perfect proofing. Two color profiles in EFI Proofing make the proofer behaving exactly the same in terms of color as the subsequent production device. The reference profile defines the color characteristics of the final output device, while the paper profile defines that of the inkjet or laser proofer. Numerous reference and paper profiles are included on the Colorproof CD. If you require a custom ICC profile, the EFI Premium Option is available as an add-on. It is an affordable, easy-to-use profiling solution, working with the same color measuring devices as the EFI LinTool.

**Control** is the final step in achieving the perfect proof. Add-on modules such as EFI Remoteproof and the EFI Premium Suite Option are available. Both offer easy-to-use solutions for carrying out technical measurements and objective quality assurance routines.

All EFI products undergo **Continued Development**. In the ever-changing world of digital printing, this means we are constantly striving to provide you with ideal solutions to meet your every needs and the needs of your customers.



EFI Colorproof works with the following file formats: PostScript 3, EPS, PDF, TIFF, TIFF/IT, JPEG, Delta lists, Scitex CT/LW and EFI Remote Container. Color formats supported are: CMYK, RGB and L\*a\*b\*.

EFI Colorproof is also fully compatible with PDF/X-1, PDF/X-1a and PDF/X-3.

EFI Colorproof includes special color libraries for Pantone, HKS and Toyo colors. With the brand new special color editor, you can go even further. The editor lets you configure gradations for special colors, ensuring that even where these are in all sorts of different tonal shades they are always perfectly reproduced.

## Product Versions

### EFI Colorproof™ M

This version supports numerous professional inkjet printers up to A3+ format.

### EFI Colorproof™ XL

This version supports inkjet printers up to 24 inches (61 cm) print width.

### EFI Colorproof™ XXL

This version supports inkjet printers up to 60 inches (152 cm) print width.

### EFI Colorproof™ Laser

This version supports various laser and LED printers from many leading manufacturers.

Whether for fast proofs or as a printing system for small runs, EFI Colorproof Laser is the right version to choose for volume proofing.

## EFI Premium series

Also available: The EFI Premium Option™ or EFI Premium Suite Option™. These packages work with EFI Colorproof to enhance color management and enable quality control.

Please contact your certified dealer or EFI for further information.

## EFI Proof Paper

Paper is an integral component of a digital proofing system and has an enormous impact on how inkjet printers reproduce color.

Users should be just as selective about what paper to use, as about what printer and software to use. Under the EFI Proof Paper label, certified resellers offer a wide range of quality media specified by the EFI development team and produced in accordance with extremely stringent quality requirements.

For example, the EFI Remoteproof Paper 9180 was developed especially for offset simulations.

It provides an outstanding range of colors on most inkjet printers and uses very little visual brighteners to ensure a match between the measured values and the visual impression.

## EFI Academy

EFI Academy offers an extensive range of training courses for all EFI products. Class curriculum can also be tailored to meet specific company's needs. Please visit [www.efi.com](http://www.efi.com) for a list of classes offered by your regional EFI office.