

## Epson Stylus<sup>®</sup> Pro 4800

SET YOUR EXPECTATIONS HIGHER



Every now and then, a breakthrough comes along changing the way we express ourselves. Not simple improvements upon existing technology, but radical changes giving us new options to express our creative visions.

### **Introducing the all-new Epson Stylus® Pro 4800.**

Designed to meet the needs of the most demanding professionals, the Epson Stylus Pro 4800 incorporates a unique 17-inch wide printer design with a breakthrough new 8-color ink technology, forcing us to reconsider what's possible from photographic ink jet printing.

Epson UltraChrome K3™ ink technology represents a turning-point in the history of ink jet printing. Inspired by our past-generations of pigmented ink development, Epson UltraChrome K3 incorporates a new three-level black, along with eight new color pigments dramatically raising the bar for professional color and black and white prints.

Imagine producing archival prints with amazing color fidelity, gloss-level, and scratch resistance, while providing consistently stable colors that significantly outperform lesser ink technologies. Imagine producing

professional neutral and toned black and white prints with higher density levels and virtually no metamerism or bronzing.

Even more remarkable, our new high-performance 1-inch wide print head produces an astonishing resolution of 2880 x 1440 dpi to deliver a level of image quality and speed that even exceeds our previous best.

Handling virtually any media type in roll or cut-sheet up to 17-inch wide, the Epson Stylus Pro 4800 incorporates a high-capacity paper tray capable of handling cut-sheet media up to 17" x 22". We even incorporated four different ways to load media, including a front-loading straight-through path capable of handling media up to 1.5mm poster board, giving you the ultimate in media flexibility.

The Epson Stylus Pro 4800 represents a level of technology unprecedented in Epson's history. Combining the extreme precision of an Epson Stylus Pro print engine, along with the extraordinary performance of UltraChrome K3 Ink Technology, results in a print void of any signs of how it was produced. Prepare to be amazed all over again.

# WELCOME TO THE NEXT LEVEL.



**Epson Stylus Pro 4800**  
*Shown with optional printer stand*

## **The Future of Print Head Technology**

### **All New 8-Channel Print Head Technology**

- Print head design capable of handling eight separate ink channels
- 1-inch wide high-performance print head with 180 nozzles per channel

### **Maximum Resolution of 2880 x 1440 dpi**

- Incredibly sharp text and line art
- Extremely fine blends and photographic transitions

### **Variable-Sized Droplet with AMC™ Technology**

- Produces variable-sized droplets as small as 3.5 picoliter to greatly decrease print times while optimizing photographic quality
- Proprietary Active Meniscus Control (AMC) technology precisely controls the curvature of every ink droplet within each nozzle before releasing it onto the media. The result is extremely sharp and accurate placement of ink droplets for outstanding photographic print quality.

### **Epson PreciseColor™ Technology**

In order to ensure consistent printing between multiple Epson Stylus Pro printers of the same model, Epson has enhanced the production process to include colorimetric calibration. This system evaluates and adjusts each printer's difference at the manufacturing stage, assuring you of consistent color output from printer to printer.

### **Automatic Print Head Alignment Technology**

- Built-in sensor reads printed data for highly precise alignments of all color channels
- Aligns both single and bi-directional print modes

### **Automatic Print Head Cleaning Technology**

- Built-in sensor reads nozzle check pattern and automatically cleans print head if any problems are found – even partially clogged nozzles





### PROFESSIONAL PHOTOGRAPHY

Commercial | Fine Art  
Event | Portrait | Nature  
Black & White

8" x 10" photos  
in 3:17 min:sec

16" x 20" photos  
in 9:46 min:sec

### GRAPHIC DESIGN

Comps and Layouts  
Packaging Mock-ups  
Prepress Proofing  
Signage

17" x 22" comps &  
production prints  
in 4:07 min:sec

17" x 22" contract  
quality proofs  
in 9:46 min:sec



### THE WONDERS OF ANTARCTICA

On a small, remote island off of South Georgia lies a world of extraordinary beauty and wonder. Flocks of albatross wander freely in the vast, pristine wilderness. This is Antarctica.

## Epson UltraChrome K3™ Ink Technology

### All New 8-Color Pigment-Based Ink System

- High-density pigments for an extremely wide color gamut
- Professional print permanence ratings for truly sellable quality prints
- High-gloss Microcrystal Encapsulation™ Technology for reduced gloss differential
- Superior scratch resistance from improved pigment and resin chemistry
- Color is stable immediately after printing – no short-term color shifting
- Depending upon media – produces a black density up to 2.3 with an L\* value of 4.1\*

### New Three-Level Black Ink Technology

- Simultaneously uses Black, Light Black, and Light Light Black inks
- Significantly improves the printer's gray balance while eliminating color casts
- Impressive midtones and highlights for a smoother tonal range
- Virtually eliminates the metamerism and bronzing of basic pigment chemistry
- Enhances the ICC profiling process for ColorSync™ and ICM™ workflows

### New Advanced Black and White Printing Technology

- Unique driver technology taking full advantage of our three-level black system to produce professional black and white prints from color or grayscale image files
- Proprietary Epson screening technology developed specifically for black and white printing
- Produces a truly consistent image with no color crossover or color cast
- Produces sellable quality neutral and toned black and white prints from a single ink set

### Two User-Exchangeable Black Ink Modes

Printer can utilize two different black ink modes – Photo Black or Matte Black. This innovative solution optimizes the black ink density for various media types, dramatically improving the final print quality.

The standard Photo Black ink mode can be used for any media type with professional results. However, for certain Epson media types such as Velvet Fine Art, Enhanced Matte, and UltraSmooth Fine Art, using the optional Matte Black ink mode instead, will dramatically increase your black optical density for even better print quality.

## Unique 17" Wide Print Engine Technology

### Professional Media Handling

- Prints on virtually any media type, in roll or cut sheet, from letter up to 17" wide
- Built-in high-capacity paper tray handling up to 250 sheets of plain letter-sized paper or up to 50 sheets of photographic media up to 17" x 22"
- Supports printing on both sides of the media without damaging the previously printed side
- User-adjustable Roll Media Spindle accepts either 2" or 3" media cores

- Four built-in media paths including roll feed, cut-sheet tray, front-top manual feed, and a straight-through front manual feed handling weights up to 1.5mm thick posterboard
- Built-in automatic media cutter

### High Performance Print Engine Speeds<sup>A</sup>

The Epson Stylus Pro 4800 utilizes our latest print head technology – making it one of the fastest printers ever made by Epson. The following table represents the highest quality print modes for three popular print sizes.

Print Mode	8" x 10"	11" x 14"	16" x 20"
Fine – 720 dpi HS	1:28	2:27	4:07
SuperFine – 1440 dpi HS	2:00	3:25	6:07
SuperFine – 1440 dpi	3:17	5:35	9:46
SuperPhoto – 2880 dpi HS	3:54	6:35	11:40
SuperPhoto – 2880 dpi	6:25	10:55	18:57

Print speeds are shown in min:sec. HS = High Speed Print Mode (Bi-directional Print Mode)

### Epson Intelligent High-Capacity Ink System

- Eight individual 110ml or 220ml ink cartridges
- Greatly increases productivity by allowing you to replace ink cartridges on the fly, even during the middle of a print job
- Utilizes both 110ml and 220ml ink cartridges simultaneously to optimize ink usage

### Epson PrintJob™ Information System

- Built-in printer memory automatically tracks key print job statistics, such as ink and media usage, remaining media, data file names, user names, print times, and more
- Reports can be download from printer memory or printed

### Superior Connectivity

- Includes one USB 2.0, one IEEE 1394 (FireWire®) and one Epson Expansion Slot for installing the optional 10/100 BaseT Ethernet card (Ethernet included with Pro Edition bundle)
- Professional Epson Photographic Drivers for Macintosh® and Windows®
- Optional PANTONE® licensed and SWOP® certified PostScript® Language Level 3™ Compatible RIP by ColorBurst® (included only with Pro Edition bundle)
- Fully supported by most leading third party RIPs and workflows – the Epson Stylus Pro series printers are used within the most demanding commercial printing environments

### World Class Service and Support

- Free one-year of coverage under the Epson Preferred<sup>SM</sup> Protection Plan with toll-free telephone support available Monday through Friday and usually next-business-day full unit exchange service
- Optional one or two-year Epson Preferred Plus Service plans available

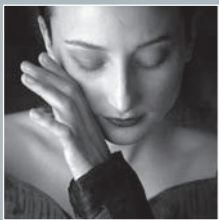
\* Data based on Epson Premium Luster Photo Paper (250)





©2005 Rodney Smith

17"



**Advanced Black and White Printing Technology**

Proprietary Epson screening and driver technology developed specifically for producing professional neutral or toned black and white prints.

**8-Color UltraChrome K3™ Ink Technology**

The new standard by which all other ink systems will be judged. All new high-density pigments for an extremely wide color gamut, amazing high-gloss prints, unique three-level black technology, all with virtually no metamerism or bronzing.

**High Performance Print Engine Speeds**

High performance 1-inch wide print head technology produces prints faster than any previous model, making the Epson Stylus Pro 4800 one of the fastest photographic quality printers ever made by Epson.

**Professional Media Handling**

Prints on virtually any media type up to 17" wide up to 1.5mm thick posterboard. Unique high-capacity paper tray handling cut sheet media up to 17" x 22".

**Intelligent High-Capacity Ink System**

Eight individual 110ml or 220ml ink cartridges for truly professional use. You can even mix and match both 110ml and 220ml sizes to further optimize ink usage.

**Auto Head Alignment and Cleaning Technology**

Built-in sensor automatically aligns the 8-channel print head for extremely accurate dot placement. This system is so effective, it can even detect when a print head is getting dirty and automatically clean if needed.

# Epson Stylus Pro 4800 Print Engine Specifications

## Printing Method

8-Channel Print Head Technology

8-Color (C, Lc, M, Lm, Y, Lk, LLk + PK or MK) pigment based Variable-Sized Droplet Micro Piezo drop-on-demand ink jet with AMC™ technology

Epson UltraChrome K3™ Ink Technology

## Nozzle Configuration

Color and Monochrome heads: 180 nozzles x 8

## Droplet Technology

Smallest droplet size: 3.5 picoliter  
Variable Droplet Technology can produce up to three different sizes per print line

## Resolution

2880 x 1440 dpi; 1440 x 720 dpi; 720 x 720 dpi;  
720 x 360 dpi; 360 x 360 dpi; 360 x 180 dpi

## Print Engine Speed<sup>1</sup>

8" x 10" prints from 50 secs to 6:25 - Normal is 3:17  
11" x 14" prints from 1:44 to 10:55 - Normal is 5:35  
16" x 20" prints from 4:07 to 18:57 - Normal is 9:46

## Acoustic Noise Level

Approximately 50 dB(A) according to ISO 7779

## Printer Language/Drivers

Epson ESC/P2 raster photographic drivers standard

Optional PANTONE® licensed and SWOP® certified PostScript® Language Level 3™ Compatible RIP by ColorBurst® (included only with Pro Edition bundle)

Supported by most leading third-party RIPs and workflows

## Operating Systems Supported

Macintosh® Panther 10.3.9 or higher  
Tiger 10.4 or higher

Windows® 2000 or XP (Pro or Home Edition)

## Printer Interfaces

Includes one USB (1.1 and 2.0 compatible), one IEEE1394 FireWire™ and one Epson Expansion Slot used for installing the optional internal 10/100 BaseT Ethernet card (Ethernet included in Pro Edition Bundle)

## Dimensions

33.4"(W) x 14"(H) x 30"(D)  
Printer weight: 89 lb

## BorderFree® Printing

Left and right borderless "bleed" printing for the following roll media widths:  
8.3", 10", 12", 13", 14", 16", 17"

Top and bottom edges can be automatically cut to any length three different ways during printing on roll media

## Printable Area

Maximum paper width 17"  
Left and right margins 0 or 3mm each (0.24" total)  
Top and bottom margins 0 to 25mm each  
Maximum printable width 17.16" (full bleed 17" width)  
Maximum printable length Limited by application, OS, and driver/RIP used

## Media Handling

Roll media size Single roll up to 17" width  
Roll media length Up to 132' (limited by core dia.)  
Cut sheet input tray size Up to 17" x 22"  
Cut sheet media input Up to 250 sheet tray, top and rear manual feed slots  
Media core compatibility Handles both 2" and 3" cored media  
Max. roll media diameter 4" (2" core) or 6" (3" core)  
Weight 12 lb bond up to 1.5 mm posterboard  
Built-in media cutter Automatic and manual cutting

## Line Accuracy

+ or - 0.2% of specified page length

## Epson Intelligent Ink Cartridge

Ink cartridge size 110ml or 220ml  
each color x 8 colors total  
Ink cartridge shelf life 2 years from printed production date or 6 months after open

## Lightfastness Ratings<sup>2</sup>

Epson UltraChrome K3 Ink Color: Up to 108 years  
B&W: Over 200 years

## Environmental Characteristics

Temperature operating 50° to 95° F (10° to 35° C)  
Storage -4° to 104° F (-20° to 40° C)  
Humidity operating 20 to 80% relative humidity  
Recommended 40 to 45%  
Storage 5 to 85% relative humidity (no condensation)

## Safety Approval

Safety standards UL1950, CSA 22.2 950 FDA  
EMI FCC Part 15 subpart B class B,  
CSA C108.8 class B  
AS/NZS 3548 class B

## Engine Reliability

Cutter life ~2,000 cuts (coated media)  
Maintenance parts Pump unit, flushing box,  
head cleaner, cap assembly  
First major maintenance interval (number of 8" x 10" prints)  
720 x 720 dpi 45,000 prints  
1440 x 720 dpi 29,500 prints  
2880 x 1440 dpi 15,200 prints

Note: when printing in uni-directional mode the above numbers are reduced by half

## Electrical Requirements

Voltage AC120V or (220V to 240V)  
Frequency 50 to 60 Hz  
Current 1.0A / 100-120V  
Power consumption Approx. 59W or less (operating)  
< 5W (standby)  
< 1W (power off mode)  
Energy Star Compliant

## Product/Accessories

Epson Stylus Pro 4800 Print Engine  
Epson Stylus Pro 4800 Professional Edition  
includes ColorBurst RIP & Ethernet

## Part Numbers

C593001UCM  
C593001PRO

Epson Stylus Pro 4800 Printer Cabinet Stand C4800STAND

Epson Stylus Pro 4800 TUMI® Printer Cover C4800TUMI

Internal 10/100 BaseT Ethernet Type-B Card C12C824052

Additional One-year Epson Preferred Plus Service EPP48B1

Additional Two-year Epson Preferred Plus Service EPP48B2

Paper Roller Spindle (Normal Tension) - 2" or 3" C12C811171

Paper Roller Spindle (High Tension) - 2" or 3" C12C811191

Replacement Printer Cutter Blade C12C815291

Replacement Ink Maintenance Tank C12C890191

## Epson UltraChrome K3 Ink (110ml) (220ml)

	(110ml)	(220ml)
Photo Black ink cartridge	T564100	T565100
Cyan ink cartridge	T564200	T565200
Magenta ink cartridge	T564300	T565300
Yellow ink cartridge	T564400	T565400
Light Cyan ink cartridge	T564500	T565500
Light Magenta ink cartridge	T564600	T565600
Light Black ink cartridge	T564700	T565700
Light Light Black ink cartridge	T564900	T565900
Matte Black ink cartridge	T543800	T544800

<sup>A</sup> Based upon print engine speed only. Total throughput times depend upon front-end RIP, file size, printer resolution, ink coverage, networking, etc. Normal mode based on superfine-1440dpi.

<sup>B</sup> Ink lightfastness rating based on accelerated testing of prints on specialty media, displayed indoors, under glass. Actual print stability will vary according to media, printed image, display conditions, light intensity, humidity, and atmospheric conditions. Epson does not guarantee longevity of prints. For maximum print life, display all prints under plexi, glass or lamination or properly store them. Visit [www.wilhelm-research.com](http://www.wilhelm-research.com) for the latest information.

**EPSON**  
EXCEED YOUR VISION

**Epson America, Inc.:** 3840 Kilroy Airport Way, Long Beach, CA 90806  
**Epson Canada, Inc.:** 3771 Victoria Park Avenue, Toronto, Ontario M1W 3Z5  
Internet Website: [www.graphicsepson.com](http://www.graphicsepson.com)



Specifications and terms are subject to change without notice. EPSON, EPSON Stylus, Epson UltraChrome K3 and Micro Piezo are trademarks/registered trademarks of Seiko Epson Corporation. BorderFree is a registered trademark of Epson America, Inc. All other product brand names are trademarks and/or registered trademarks of their respective companies. Epson disclaims any and all rights in these marks.  
© Epson America, Inc. 2005. CPD-19545 45K 5/05 GAC