

# Epson Stylus® Pro 7900 and 9900

REDEFINING THE FUTURE OF PRINTING



# Our Next Generation.

For more than a decade, Epson has set the standard by which all other photographic printing technologies are judged. So, when we decided to develop an entirely new generation of photographic printing technology, the significance of this effort inspired our engineers to rethink everything.

## Introducing the all-new Epson Stylus Pro 7900 and 9900 printers.

Representing our next generation, the Epson Stylus Pro 7900 (24-inch) and Epson Stylus Pro 9900 (44-inch) incorporate our latest achievements in photographic ink jet technology. By combining the precision of our MicroPiezo TFP™ print head with the extraordinary performance of Epson UltraChrome® HDR Ink, our newest generation of Epson Stylus Pro printers continues to represent a level of technology unprecedented in Epson's history.

Epson UltraChrome HDR represents our latest generation of pigment ink technology. Now utilizing ten colors — including an all-new Orange and Green — Epson UltraChrome HDR Ink produces the widest color gamut ever from an Epson Stylus Pro printer. Even more remarkable, combining Epson UltraChrome HDR Ink with our new Epson AccuPhoto™ HDR screening technology dramatically raises the level of print quality and once again sets a new benchmark standard for photographic reproduction.

Our advanced Epson MicroPiezo TFP print head is capable of producing higher quality prints, at speeds almost twice as fast as our previous generation. And, with our latest ink-repelling coating and auto nozzle verification technologies, clogged nozzles are virtually eliminated.

Developed in partnership with X-Rite, Epson has incorporated an optional, high performance, in-line spectrophotometer. When driven by the latest front-end RIPs, Epson SpectroProofer™ can automate any color management process in your commercial proofing workflow.

With printers capable of handling virtually any media type, in roll or cut sheet, up to 24 or 44 inches wide, Epson sets the standard for professional media use. Whether producing sellable color or black-and-white photography, fine art reproduction, or producing color accurate commercial and flexographic proofs for client approvals, never before have Creative Professionals had such powerful tools, allowing them to produce their vision without compromise.

With every introduction of a new Epson Stylus Pro printer, we continue to innovate and refine the overall experience. With the introduction of our latest Epson Stylus Pro 7900 and 9900 printers, Epson is once again redefining what's possible from photographic ink jet printing.

Welcome to our next generation.

### Epson UltraChrome HDR Ink

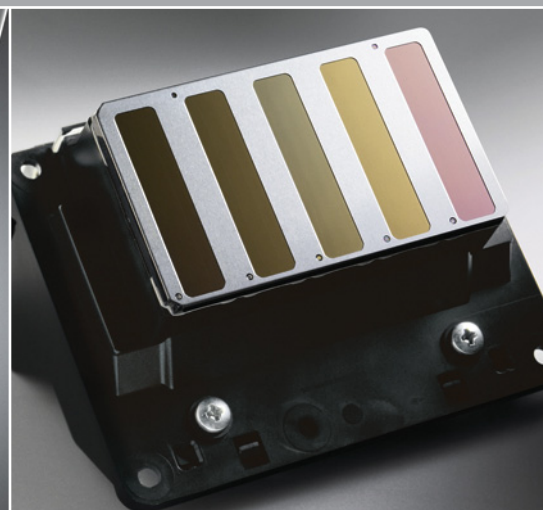
Epson has set a new standard in professional-level ink technologies by utilizing ten colors, including an all-new Orange and Green.

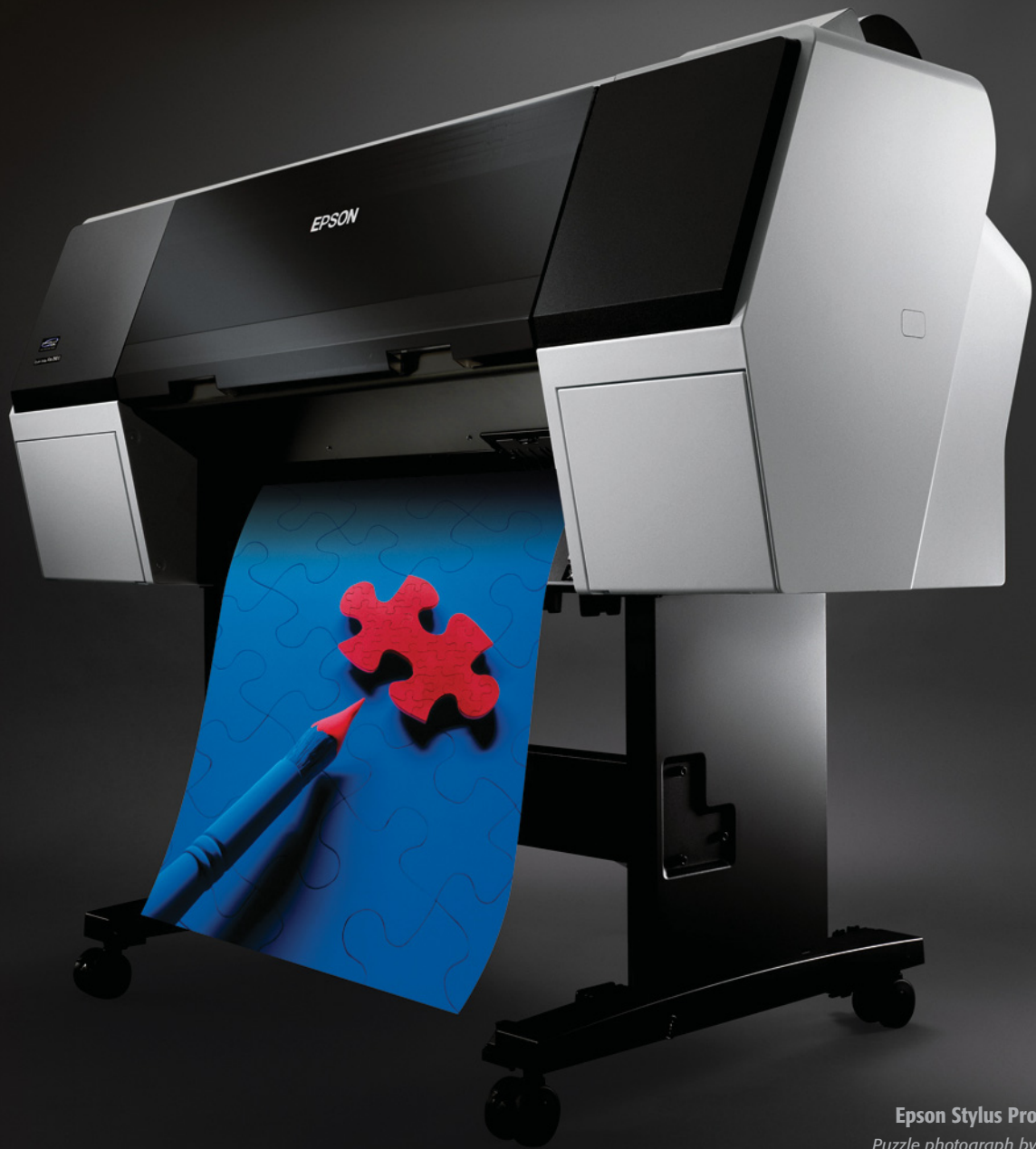
### Epson MicroPiezo TFP Print Head

Extreme print performance and dot placement accuracy. Quite possibly the most advanced ink jet print head technology ever developed.

### Epson ePlaten™ Technology

Highly accurate, automatic media loading and handling, combined with fast, spindle-free roll media support for less chance of media damage.





**Epson Stylus Pro 7900 – 24"**  
*Puzzle photograph by Jeff Schewe*

## Our Next Generation of Photographic Printing

- A new standard has been set with Epson UltraChrome HDR Ink technology
- Extreme color gamut, especially within the midtone-to-highlight color ranges
- Epson AccuPhoto HDR screening redefines photographic accuracy, color and clarity
- The combination of these technologies represents a significant improvement in photographic ink jet printing

*Photograph by Howard Schatz*





Epson Stylus Pro 9900 – 44"

## Epson SpectroProofer 24 and 44 – Powered by X-Rite

- Optional 24- or 44-inch wide spectrophotometer developed jointly with X-Rite
- Simple installation; fits cleanly into the front of the Epson Stylus Pro 7900 or 9900
- Incorporates a high performance X-Rite® ILS20ED spectrophotometer for extreme measurement accuracy below 0.2 dE94
- UV-cut and non-UV-cut versions available at the time of purchase
- Both black and white interchangeable backing plates included
- Built-in print dryer to accelerate the dry-down and reading process
- When driven by the latest front-end RIP software, the Epson SpectroProofer can automate virtually any color management process in your workflow





## Rethink Commercial and Flexography Proofing

- Quite possibly the best proofing system available today
- Extreme color gamut makes it possible to hit spot and client-specific colors accurately
- Compatible with the widest range of certified proofing media in the industry
- Superior color consistency, proof after proof and day after day
- Legendary Epson durability for virtually maintenance-free proofing, 24/7
- Capable of managing higher proofing volumes for increased productivity
- Compatible with most leading third-party RIPs and workflows
- Capable of proofing almost any other printing method – even package and label printing



## Advanced Print Head Technology

### High-Precision Ten-Channel Epson MicroPiezo TFP Print Head

- Thin Film Piezo (TFP) print head design capable of handling ten separate ink channels
- One-inch-wide, high performance print head with 360 nozzles per channel
- Auto-sharing Black ink channel technology
- Low vibration meniscus control for highly accurate dot shape and placement
- All-new ink repelling coating for dramatically reduced nozzle clogging
- Produces variable-sized droplets as small as 3.5 picoliters to greatly decrease print times while optimizing photographic quality

### Epson AccuPhoto HDR Screening

- Advanced ten-color screening algorithm resulting in prints with superior color and clarity
- Maximum resolution of 2880 x 1440 dpi for incredibly sharp text and line art
- Produces extremely fine blends and photographic transitions
- Extremely accurate highlight-to-shadow details
- No visible photographic graininess due to the printing process<sup>1</sup>
- Ensures consistent color balance regardless of the viewing light source
- When combined with the precise dot placement accuracy of the Epson MicroPiezo TFP print head, overall photographic print quality is dramatically improved

### Automatic Print Head Alignment

- Built-in sensor performs highly precise alignments of all color channels
- Aligns both single- and bi-directional print modes

### Automatic Nozzle Verification and Cleaning

- Embedded sensors quickly verify nozzle status without using media and automatically clean the print head if required

## Epson UltraChrome HDR Ink Technology

### Next Generation Ten-Color Pigment-Based Ink System

- Unique High Dynamic Range (HDR) pigments for an extremely wide color gamut
- Ten-color printing system including all-new Orange and Green inks
- Designed to work with Epson AccuPhoto HDR screening technology
- Professional print permanence ratings
- Outstanding short-term color stability for mission-critical proofing applications
- Improved Microcrystal Encapsulation™ technology for reduced gloss differential
- Improved black density up to 2.5 with an L\* value ~2.8<sup>2</sup>

### Three-Level Black Ink Technology

- Simultaneously uses Black, Light Black, and Light Light Black inks
- Significantly improves the gray balance while eliminating color casts
- Outstanding highlight-to-shadow grayscale accuracy for a smoother tonal range
- Virtually eliminates any bronzing of basic pigment chemistry
- Enhances the ICC profiling process for ColorSync™ and ICM™ workflows

### Automatic Black Ink Mode Switching

With both Photo and Matte Black ink cartridges installed simultaneously, the Epson Stylus Pro 7900 and 9900 series printers automatically utilize the optimal black ink mode, delivering maximum black density for the chosen media. Taking advantage of the Epson MicroPiezo TFP auto-sharing black ink channel ensures a fast and efficient switch. And, to further reduce switching errors, the user can now confirm the switching process from the front control panel.

The standard Photo Black ink mode can be used for any media type with professional results. However, for certain Epson media types such as Velvet Fine Art, Enhanced Matte and UltraSmooth® Fine Art, using the Matte Black ink mode will dramatically increase your black optical density for even better print quality.

## Advanced Black-and-White Printing Technology

- Unique driver technology takes full advantage of our three-level black system to produce professional black-and-white prints from color or grayscale image files
- Advanced Epson screening technology developed specifically for black-and-white printing
- Produces a truly consistent image with no color crossovers or color casts
- Capable of fine-color adjustment for truly customized black-and-white prints
- Some of the world's greatest black-and-white prints are being produced with this technology



Photograph by Lois Greenfield

## Next-Generation Print Engine Technology

### Professional Media Handling

- Compatible with virtually any media type, in roll or cut sheet, up to 24 or 44 inches wide
- Accurate loading of cut-sheet media up to 1.5 mm thick posterboard
- All media is front-loaded via a unique straight-through media path
- Printer and driver based media identification and synchronization system for virtually error-free media use
- Media bin safely captures multiple prints up to 24x36 or 44x36
- Optional Automatic Take-up Reel System for unattended production of large print runs (available on the Epson Stylus Pro 9900 only)

### Epson ePlaten Media Loading Technology

- Accurate automatic media loading, movement, skew adjustment and tracking
- Electronically controlled roll media back tension
- Automatic roll media rewind upon media release
- Simplifies the overall roll and cut-sheet media loading process

### Spindle-Free Roll Media Loading

- User-adjustable roll media adapters accept either 2- or 3-inch media cores
- Simple tension lever ensures quick and secure media core loading
- Designed with Epson ePlaten technology for highly accurate roll media usage
- Additional media adapter pairs available as accessories for efficient roll media switching

### Roll Media Length Tracking and Identification System

- Real-time automatic remaining roll media length counter
- Auto bar code tagging of remaining roll media information for faster reloading
- Very useful for tracking partially used media rolls

### High Performance Rotary Cutting System

- Durable rotary cutter, designed to be virtually maintenance free
- High performance cutting speeds – cuts 24" to 44" wide rolls in under two seconds

- Off-carriage cutting system eliminates media dust within critical components
- Capable of cutting virtually any media type, including most canvas and fine art papers

### Epson Intelligent High-Capacity Ink System

- Pressurized ink cartridge technology ensures reliable ink delivery at all print speeds, while dramatically reducing the physical size of the ink cartridges
- Eleven individual ink cartridges; available in 150 ml, 350 ml, and 700 ml fill capacities
- On-the-fly ink cartridge replacement for increased productivity
- Mix and match across all three ink cartridge sizes

### Easy-to-Use Front Control Panel

- High resolution, 2.5-inch color LCD for improved viewing of printer status
- Simple button layout for all navigation and basic printer functions

### Superior Connectivity

- Standard connectivity includes one Hi-Speed USB 2.0 and one 10/100Base-T Ethernet port
- Professional Epson photographic drivers for Macintosh® and Windows®
- Fully supported by most leading third-party software RIPs and workflows

### myEpsonPrinter.com<sup>SM 3</sup>

- Advanced web-based printer information and management system
- Automatically tracks consumables usage and print job information, regardless of location
- Provides real-time cost-per-print estimates and print-job-run information
- Creates various reports using actual print job information
- Provides remote printer monitoring and alert capability
- Secure information management using the latest encryption technologies
- True web-based, fleet-wide printer management via secure, web-based account

### World-Class Service and Support

- Includes one year of limited coverage under the Epson Preferred<sup>SM</sup> Protection Plan with toll-free telephone support available Monday through Friday and usually next-business-day, on-site service
- Optional one- or two-year Epson Preferred Plus service plans available

## High Performance Print Engine Speeds

Utilizing our latest print head technology, the Epson Stylus Pro 900 series printers are among the fastest in the industry.

Print Mode <sup>A</sup>	16" x 20"	20" x 30"	40" x 60"
Fine – 720 dpi HS	2:53	5:03	15:26
SuperFine – 1440 dpi HS	3:47	6:39	24:20
SuperPhoto – 2880 dpi HS	7:14	12:52	40:05

HS = High-speed Print Mode (Bi-directional Print Mode) | Print speeds are shown in min:sec.



<sup>1</sup> Photographic graininess could still be visible if present in the actual file being printed.

<sup>2</sup> Dmax and L\* values are based on Epson Exhibition Fiber Paper.

<sup>3</sup> Fees may apply. Visit [www.myepprinter.com](http://www.myepprinter.com) for details.

# Epson Stylus Pro 7900 and 9900 Print Engine Specifications

## Printing Technology

Advanced MicroPiezo TFP print head  
with ink repelling coating technology  
10-channel, drop-on-demand, ink jet print head  
11-cartridge (O, G, C, Lc, VM, VLm, Y, Lk, LLk + PK or MK)  
Auto head alignment and cleaning technology  
Auto sharing black ink channel  
Epson UltraChrome HDR Ink technology  
Professional-level pigment-based ink technology

## Nozzle Configuration

Color and Monochrome 360 nozzles x 10

## Droplet Technology

Smallest droplet size 3.5 picoliters  
Variable Droplet Technology produces up to three different droplet sizes per print line

## Resolution

2880 x 1440 dpi; 1440 x 1440 dpi; 1440 x 720 dpi;  
720 x 720 dpi; 720 x 360 dpi; 360 x 360 dpi

## Print Engine Speed<sup>A</sup>

16" x 20" prints from 2:53 to 7:14 – Normal is 3:47  
20" x 30" prints from 5:03 to 12:52 – Normal is 6:39  
40" x 60" prints from 15:26 to 40:05 – Normal is 24:20

## Acoustic Noise Level

Approximately 50 dB(A) according to ISO 7779

## Operating Systems Supported

**Macintosh** Tiger 10.4.9 or higher (universal binary)  
Leopard 10.5 or higher  
(16-bit image file support)  
**Windows** Vista and XP (both 32- and 64-bit supported)

## Printer Interfaces

Includes as standard one Hi-Speed USB 2.0 (1.1 compatible)  
and one Ethernet port (10/100Base-T)

## Dimensions

**SP7900** 54" (W) x 27" (D) x 48" (H)  
Weight: 187 lb  
**SP9900** 74" (W) x 27" (D) x 48" (H)  
Weight: 256 lb  
Dimensions and weight include printer stand

## BorderFree<sup>®</sup> Printing

Left and right borderless "bleed" printing for the following roll media widths:  
**SP7900** 10", 13", 16", 17", 24"  
**SP9900** 10", 13", 16", 17", 24", 36", 44"  
Top and bottom edges can be automatically cut to any length when printing on roll media.

## Optional SpectroProofer (24/44)

Carriage mechanism 24" or 44" wide  
Spectrophotometer X-Rite ILS20ED  
Measurement accuracy Below 0.2 dE94  
Minimum patch size 7.9 mm x 7.9 mm  
Measurement time 15 patches per second  
UV handling UV and UV-cut version available  
(at time of order)  
Backing color White and black backing plates included  
Workflow integration Most leading third-party RIPs and workflows

## Printable Area

Maximum paper width SP7900 – 24" SP9900 – 44"  
Maximum printable width SP7900 – 24.16" SP9900 – 44.16"  
Left and right margins 0 to 3 mm each (0.24" total)  
Maximum printable length Limited by application, OS, and driver/RIP used  
Minimum paper width 210 mm (8.27")

## Media Handling

**SP7900** Media input Single roll up to 24" width  
Cut-sheet size Up to 24" wide media (auto-loading)  
**SP9900** Media input Single roll up to 44" width  
Cut-sheet size Up to 44" wide media (auto-loading)  
Roll media take-up reel Auto forward and backward;  
(SP9900 only) Light-based media tension sensor  
Media core compatibility User-adjustable roll media adapters accept either 2" or 3" media cores  
Max. roll media diameter 6" (when using a 3" core)  
Media weight 12 lb bond (0.8 mm), up to 1.5 mm posterboard  
Minimum sheet size 210 mm x 279 mm / 8.27" x 11"  
Built-in media cutter Rotary cutting, automatic and manual

## Epson Intelligent Pressurized Ink Cartridges<sup>B</sup>

Starter cartridge fill volume 110 ml x 11 total colors (used for initial fill at setup)  
Replacement cartridge fill volume 150 ml, 350 ml or 700 ml, each color x 11 colors total  
Ink cartridge shelf life (recommended) 2 years from printed production date or 6 months after open

## Lightfastness Ratings<sup>C</sup>

Epson UltraChrome HDR Ink Color: Up to 200 years  
B&W: Over 200 years

## Epson PreciseColor<sup>™</sup> Manufacturing

In order to ensure consistent printing between multiple Epson Stylus Pro printers of the same model, Epson has refined the manufacturing process to include colorimetric calibration. This process evaluates and adjusts each printer's performance at the manufacturing stage, ensuring consistent color output from printer to printer and print to print.

## Product/Accessories

	Part Numbers	
	SP7900	SP9900
Epson Stylus Pro Printer	SP7900HDR	SP9900HDR
Epson SpectroProofer UV-cut filter version	SPECTRO24 SPECTRO24UV	SPECTRO44 SPECTRO44UV
Automatic Take-up Reel System	Not Available	C12C815321
Replacement 44" Take-up Reel Core	Not Available	C815121
Additional Roll Media Adapters	C12C811241	C12C811241
Replacement Printer Cutter Blade	C12C815331	C12C815331
Replacement Ink Maintenance Tank	C12C890191	C12C890191

## Extended Service Programs

Additional One-year Epson Preferred Plus service	EPP900B1	EPP900B1
Additional Two-year Epson Preferred Plus service	EPP900B2	EPP900B2
Additional One-year Epson Preferred Plus service SpectroProofer only	EPPSPB1	EPPSPB1

## Epson UltraChrome HDR Ink (150 ml) (350 ml) (700 ml)

Photo Black ink cartridge	T642100	T596100	T636100
Cyan ink cartridge	T642200	T596200	T636200
Vivid Magenta ink cartridge	T642300	T596300	T636300
Yellow ink cartridge	T642400	T596400	T636400
Light Cyan ink cartridge	T642500	T596500	T636500
Vivid Light Magenta ink cartridge	T642600	T596600	T636600
Light Black ink cartridge	T642700	T596700	T636700
Matte Black ink cartridge	T642800	T596800	T636800
Light Light Black ink cartridge	T642900	T596900	T636900
Orange ink cartridge	T642A00	T596A00	T636A00
Green ink cartridge	T642B00	T596B00	T636B00

A Based upon print engine speed only. Total throughput times depend upon front-end RIP, file size, printer resolution, ink coverage, networking, etc. Normal Mode based on SuperFine – 1440 dpi.

B Cartridge yields vary considerably for reasons including images printed, print settings, temperature and humidity. Yields may be lower when printing infrequently or predominantly with one ink color. A variable amount of ink remains in the cartridge after the "replace cartridge" signal. Part of the ink from the first cartridges is used for priming the printer. Ink is used for both printing and print head maintenance. All inks are used for both black and color printing. For more information about cartridges see [www.epson.com/cartridge](http://www.epson.com/cartridge) info

C Ink lightfastness rating based on accelerated testing of prints on specialty media displayed indoors under glass. Actual print stability will vary according to media, printed image, display conditions, light intensity, humidity and atmospheric conditions. Epson does not guarantee longevity of prints. For maximum print life, display all prints under glass or lamination or properly store them. Visit [www.wilhelm-research.com](http://www.wilhelm-research.com) for the latest information.

For more details, visit our website at:

[www.proimaging.epson.com](http://www.proimaging.epson.com)

Better Products for a Better Future<sup>™</sup>

For more information on Epson's environmental programs, go to [www.epson.com/environment](http://www.epson.com/environment)



**Epson America, Inc.:** 3840 Kilroy Airport Way, Long Beach, CA 90806  
**Epson Canada, Ltd.:** 3771 Victoria Park Avenue, Toronto, Ontario M1W 3Z5  
Internet website: [www.proimaging.epson.com](http://www.proimaging.epson.com)



Specifications and terms are subject to change without notice. Epson, Epson Stylus and Epson UltraChrome are registered trademarks. Epson Exceed Your Vision is a registered trademark and MicroPiezo TFP, SpectroProofer, MicroCrystal Encapsulation and Better Products for a Better Future are trademarks of Seiko Epson Corporation. BorderFree and UltraSmooth are registered trademarks. PreciseColor, ePlaten and AccuPhoto are trademarks and Epson Preferred and myEpsonPrinter.com are service marks of Epson America, Inc. All other product and brand names are trademarks and/or registered trademarks of their respective companies. Epson disclaims any and all rights in these marks. Copyright 2009, Epson America, Inc. CPD 25822 1/09