

Professional UltraChrome™ Inks

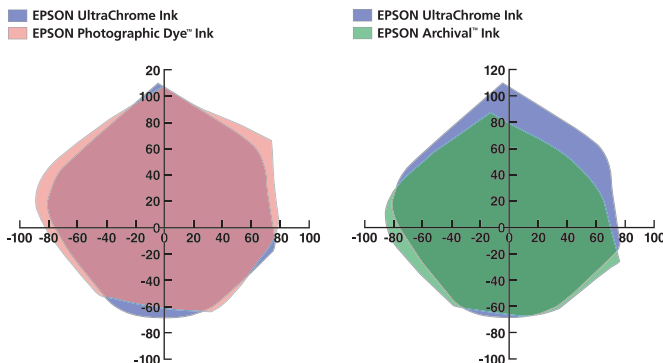
For use with

EPSON Stylus® Photo 2200 EPSON Stylus Pro 9600¹
 EPSON Stylus Pro 7600¹ EPSON Stylus Pro 10600¹

Product Information

When the requirements include the long-lasting print life of a pigment ink, the vibrant image quality and wide color gamut of a dye ink, and the versatility to extract the maximum image quality from a variety of media surfaces, the choice for professionals is EPSON UltraChrome Ink. Designed by the world leader in digital photographic printing, these revolutionary inks are engineered to deliver incredible print quality with a lightfastness rating of up to 82 years under glass on certain media². Plus, EPSON UltraChrome Ink works with the latest ink delivery technology of the EPSON Stylus Photo 2200, and EPSON Stylus Pro 7600, 9600 and 10600 printers to offer an Epson first—a seven-color interchangeable ink system that allows users to tailor an ink combination specifically geared towards their choice of Epson media. Whether it is a resin coated, glossy, photographic paper, or a velvet surfaced, cotton, fine art sheet, EPSON UltraChrome Ink allows users to determine the correct ink combination to achieve maximum quality output. CcMmY inks are joined by Light Black, Photo Black, and Matte Black inks to provide an interchangeable solution that eliminates the need to compromise. With brilliant colors, evenly milled micro pigments, and our patented Microcrystal Encapsulation™ technology, each pigment is enclosed in an acrylic resin that ensures its even distribution across the page.

Like all of Epson's innovative supplies, EPSON UltraChrome Inks are engineered to work specifically with Epson printers to give users the highest resolution and color saturation possible. Epson's printer driver software and RIP actually optimize the amount of ink released onto the page, based on the type of paper used. As always, EPSON supplies guarantee EPSON quality.



The color gamut of EPSON UltraChrome Ink not only meets, but exceeds ranges of EPSON Photographic Dye Ink. (see chart above)

EPSON UltraChrome Ink offers an improved color gamut over that of long-lasting EPSON Archival Ink. (see chart above)



Features/Benefits

- **Long-lasting ink**
 Delivers phenomenal prints with a lightfastness rating of up to 82 years under glass on certain media²
- **Microcrystal Encapsulation technology**
 Creates a remarkable color gamut similar to that of dye-based inks on EPSON media
- **Instant-drying capability**
 Facilitates increased productivity and easy handling
- **Acrylic resin coating**
 Provides exceptional durability for protection from moisture
- **Water resistant on most Epson media**
 Makes prints easy to handle, whatever the media type
- **Compatible with a full range of Epson media**
 Offers long-lasting prints when used with Epson's specialty media

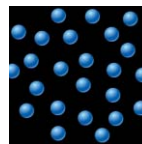
¹ UltraChrome ink version

² Lightfastness rating of up to 82 years, based on accelerated testing of prints on specialty media, displayed indoors, under glass. Actual print stability will vary according to image, display conditions, light intensity, humidity, and atmospheric conditions. Epson does not guarantee longevity of prints. For maximum print life, display all prints under glass or lamination or properly store them.

Ink Distribution Process



- Cartridge dispenses EPSON UltraChrome Ink droplets, which the printer distributes onto the paper



- Finely milled, evenly distributed pigments yield a color gamut approaching that of dye-based inks



- Epson's patented Microcrystal Encapsulation technology encapsulates an acrylic resin, offering durability and compatibility with a wide range of media substrates

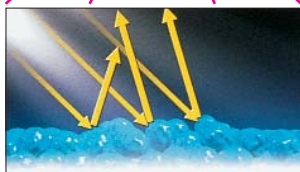
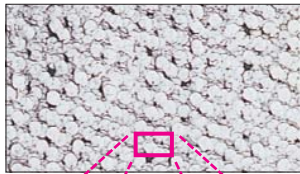
EPSON Supplies Guarantee EPSON Quality

- Guaranteed compatibility
- Optimum output quality
- Made of highest quality materials
- Backed by Epson customer support
- Easy installation and trouble-free operation

Professional UltraChrome Inks

EPSON Revolutionary Microcrystal Encapsulation Technology

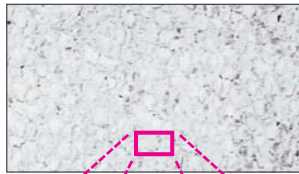
Conventional Pigment Ink



Conventional pigment ink has poor reflective properties.

Microcrystal Encapsulation technology yields high-gloss images unavailable with typical pigment ink systems.

New UltraChrome Ink System



EPSON UltraChrome Ink has even reflective properties, similar to dye ink.



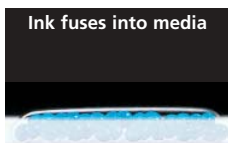
Ink laid out onto media
Ink lies on the media surface, once it is released from the printer.



Ink fusing into media
Unlike traditional pigment ink that lies on the top surface, EPSON UltraChrome Ink actually fuses into the media coating, just like dye-based ink.



Ink base ("vehicle") helps penetration into media
Epson's specialty media assist with this innovative ink penetration.



Ink fuses into media
When the coating absorbs the ink, it offers durability that surpasses that of any typical ink jet pigment ink.

Ink Cartridges

EPSON Stylus Photo 2200

Cyan ink cartridge	T034220
Light Cyan ink cartridge	T034520
Magenta ink cartridge	T034320
Light Magenta ink cartridge	T034620
Yellow ink cartridge	T034420
Light Black ink cartridge	T034720
Photo Black ink cartridge	T034120
Matte Black ink cartridge	T034820

EPSON Stylus Pro 7600¹/9600¹ (110ml)

Cyan ink cartridge	T543200
Light Cyan ink cartridge	T543500
Magenta ink cartridge	T543300
Light Magenta ink cartridge	T543600
Yellow ink cartridge	T543400
Light Black ink cartridge	T543700
Photo Black ink cartridge	T543100
Matte Black ink cartridge	T543800

EPSON Stylus Pro 9600¹ (220ml)

Cyan ink cartridge	T544200
Light Cyan ink cartridge	T544500
Magenta ink cartridge	T544300
Light Magenta ink cartridge	T544600
Yellow ink cartridge	T544400
Light Black ink cartridge	T544700
Photo Black ink cartridge	T544100
Matte Black ink cartridge	T544800

EPSON Stylus Pro 10600¹

Cyan ink cartridge	T549200
Light Cyan ink cartridge	T549500
Magenta ink cartridge	T549300
Light Magenta ink cartridge	T549600
Yellow ink cartridge	T549400
Photo Black ink cartridge	T549100
Matte Black ink cartridge	T549800

Support—The EPSON ConnectionSM

Pre-sales Support (U.S. and Canada)	800-463-7766
Automated Technical Support	800-922-8911
Internet Website	www.epson.com

¹ UltraChrome ink version

YOU'VE GOT TO SEE IT IN



www.epson.com

Epson America, Inc.
3840 Kilroy Airport Way, Long Beach, CA 90806

Epson Canada, Ltd.
3771 Victoria Park Avenue, Toronto, Ontario M1W 3Z5

Epson Latin America
6303 Blue Lagoon Drive, Suite 195, Miami, FL 33126

Specifications are subject to change without notice. EPSON and EPSON Stylus are registered trademarks and Microcrystal Encapsulation is a trademark of Seiko Epson Corporation. UltraChrome is a trademark, and EPSON Connection is a service mark of Epson America, Inc. All other products and brand names are registered trademarks of their respective companies. Epson disclaims any and all rights in these marks. Copyright 2002 Epson America, Inc. CPD-13830 10K 11/02 CL

Printed on Recycled Paper