



EYE-ONE COLOR MANAGEMENT SYSTEM

From zero to color in no time!

Eye-One Display 2

Eye-One Design

Eye-One Photo

Eye-One Proof

Eye-One XT

Eye-One Share

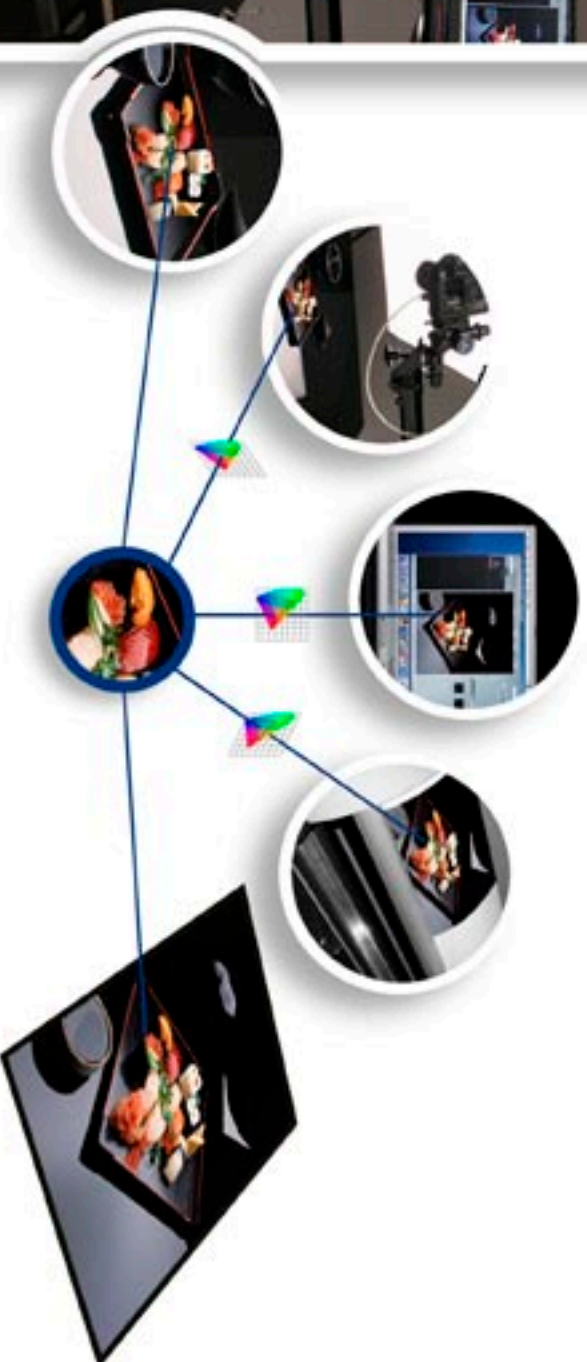
Eye-One iO

gretagmabeth
YOUR COLOR. PRECISELY.

Why do you need color management?

Color management is essential for today's complex digital imaging technologies. There are so many variables: cameras, scanners, displays, printers, customer files, legacy documents, media and ink types – the list goes on and on. And digital technologies seem to change daily. You need a flexible, complete color management solution that anticipates challenges like these:

- Accurate on-screen and projector color
- Confidence in your digital camera files, scans and customer-provided colors
- Reliable on-screen match to printer output match
- Consistency between different types of printers
- Repeatability from print to print and printer to printer
- PANTONE™ and spot color measurement and output



Eye-One will solve your color issues now faster than ever with the new "Accelerated" Eye-One Pro, letting you concentrate on what you do best – create! Here's how it works: Eye-One tools are used to create and edit color profiles for your color devices including scanners, monitors, digital cameras, digital projectors or printers. These profiles are then applied in your applications, driver or RIP to get your color correct. All of today's professional imaging and design tools support color management profiles, so it's easy to implement in your workflow!

Whether you're a designer, photographer, prepress house or print provider, there is an Eye-One solution designed to meet your critical color concerns.

Eye-One System

From zero to color in no time

Now with a new Accelerated Eye-One Pro Device

Eye-One Pro packages are the fastest, smartest and easiest to use color management solutions — with the best, overall, complete out-of-box user experience on the market today!

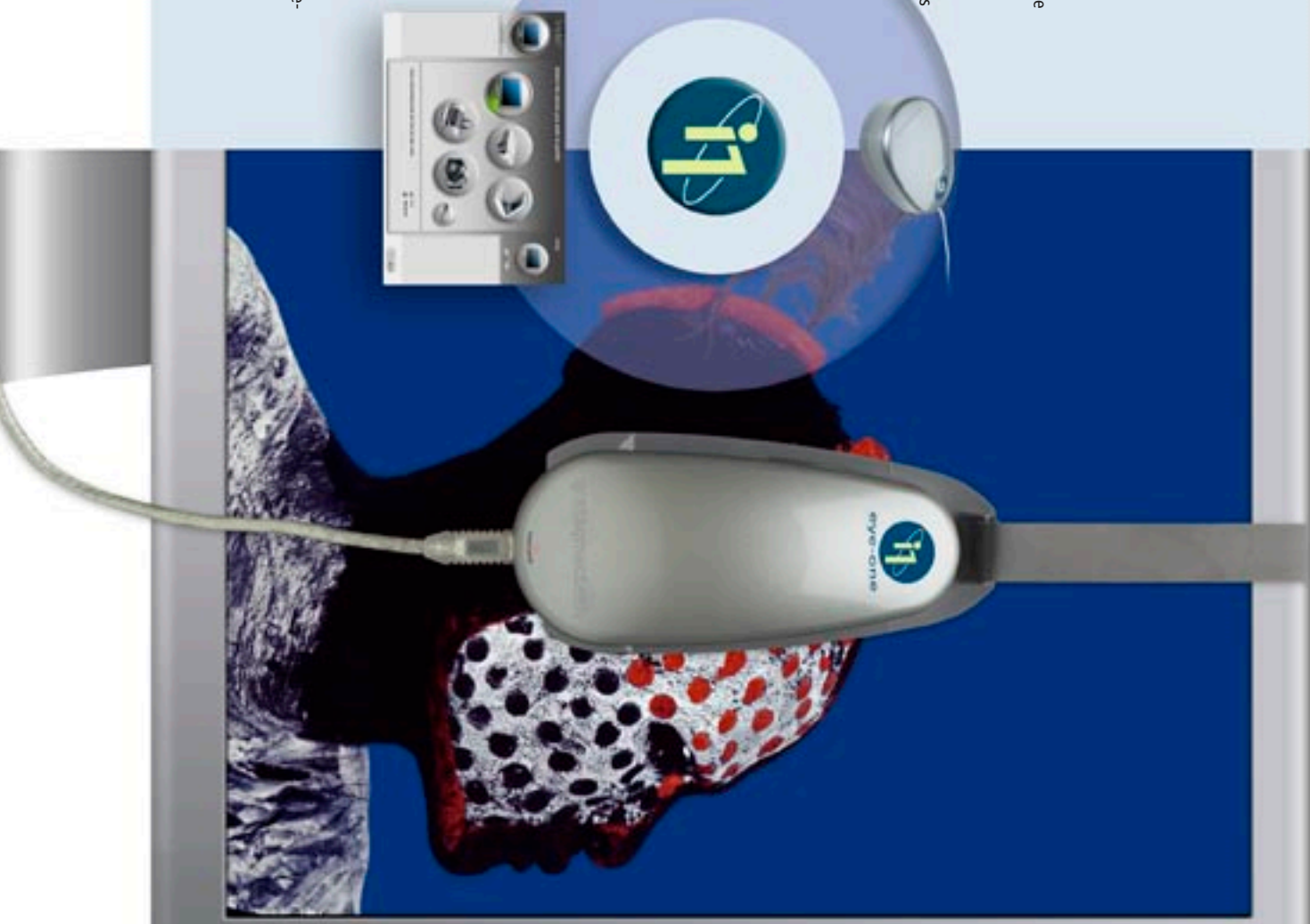
Eye-One hardware and software is designed for the unique needs of creative professionals like you who depend on accurate color. Eye-One is the one system comprehensive enough to be the only color management solution your company will ever need. If you're a designer, photographer or print provider, there are Eye-One solutions specifically designed to address your critical color concerns.

Each Eye-One solution includes an Eye-One measurement device — either an Eye-One Display 2 or new Accelerated Eye-One Pro - plus Eye-One Match 3 software.

These components form the heart of the Eye-One Color Management System. In addition, each solution offers a host of included and optional add-ons to keep pace with your changing needs. Learn it once and keep on growing.

Automating your Eye-One solution is easy with the Eye-One iO automated scanning table. Now, anyone owning an Eye-One Pro measurement device can add automation at any time. Eye-One iO will take full advantage of the enhanced speed of the new Eye-One Pro device — providing precise, automatic chart measurements in under three minutes!

Eye-One solutions make color management easier, faster and incredibly precise. *From zero to color in no time.*



Eric Meola, Photographer

Until I started using all the GretagMachbeth Eye-One modules, I was shooting in the dark, not knowing exactly how the colors on my monitor would translate in the "real world". Now I know that what I see on my monitor, or in my prints, is exactly what someone else is going to see. Now that I use GretagMachbeth's Eye-One solutions, and I've seen the results, I wouldn't dream of not using them. The Eye-One solutions are as essential as a computer—once you've tried them, you're hooked on precise, repeatable results.

www.ericmeola.com
Cover photo by Eric Meola

gretagmactheth

YOUR COLOR. PRECISELY.

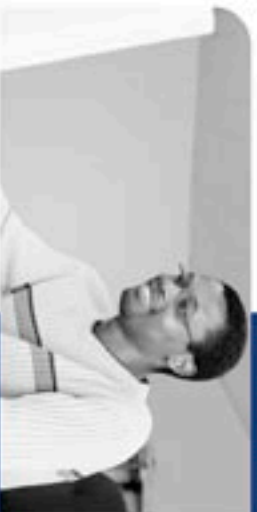
Choosing the right Eye-One Solution



If you're new to digital color:

Eye-One Display 2

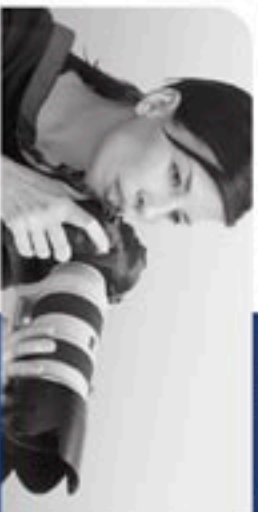
Eye-One Display 2 is where reliable and affordable color begins. This powerful, compact monitor profiling solution is an excellent entry point for anyone who depends on accurate on-screen color. Profiling your LCD, CRT or laptop display means that you'll finally see colors as they actually are. Establishing defined settings throughout your studio and at your customer's site means that everyone will see your color the same way. Ideal for photographers, creative directors, publishers, and designers working in ad agencies and corporations.



If you're a graphic designer or creative:

Eye-One Design

Eye-One Design is the entry level color management solution of choice for freelance designers, small creative firms and small print shops. With it you can quickly and easily create color profiles for displays, RGB printers and CMYK printers. And with Eye-One Share software you can easily measure and share spot and PANTONE™ colors. If you're looking to get a better color comp from your desktop printer, then Eye-One Design can get you started. When your color is critical, such as in high-end proofing or photo imaging, simply upgrade your printer module to take advantage of the full test chart capabilities in both RGB and CMYK output.



If you're a photographer or photo finisher:

Eye-One Photo

Eye-One Photo is the ideal solution for the RGB workflow of photographic professionals. Profile and manage your entire digital color workflow from input through output, including digital cameras, scanners, monitors, printers and projectors. RGB printer profiling creates excellent output profiles, which can be further fine-tuned using Eye-One Editor*. With the new Digital Camera module you can create accurate digital camera profiles for different photo tasks with the Easy or Advanced Mode. The included Mini ColorChecker and ability to measure lighting conditions will help you lock down consistent, reliable color in any shooting scenario. The Eye-One Photo SG includes all the same great features as Eye-One Photo, plus the Digital ColorChecker SG.



If you're a small prepress house, in-house repro department, commercial printing shop such as quick print, print-for-pay or large format printer:

Eye-One Proof

Eye-One Proof offers a sophisticated solution for CMYK print shops and design firms requiring robust color needs. Ensure accurate, consistent color from scan to monitor to proof and final print. The CMYK output profiling makes this the best package for anyone using a Postscript RIP. Other features include the ability to profile projectors, edit profiles*, measure and share spot and PANTONE™ colors and measure lighting conditions.



If you want the ultimate Eye-One package:

Eye-One XT

Eye-One XT bundle is for those who want it all. All Eye-One Pro capabilities, options and accessories are included in this package. Eye-One XT is perfect for companies looking for a single-source solution that ties together all of their color controls. Includes profiling of scanners, digital cameras, displays, RGB and CMYK printers, projectors, as well as profile editing* and measurement of light, spot and PANTONE™ colors. In addition, the package includes an Eye-One carrying case and Eye-One iCare, an extended warranty up to 3 years and service package for your Eye-One Pro device. You'll even receive a free day of color management training at one of our training facilities to understand how to implement a complete color managed workflow.

* Available mid 2005 - free download for purchases made from December 15, 2004.

For detailed information visit www.i1color.com

gretagmabeth

YOUR COLOR PRESENTS

Eye-One Packages

Features and Benefits



Eye-One Display 2 is a great way to get started in color management. It is the revolutionary display color management system that gives you professional level color management on any type of monitor – CRT, LCD and even laptops – in an easy to use and affordable package.

- Display-optimized colorimeter for fast, accurate LCD and CRT profiling
- Easy-to-use, step-by-step software interface
- Optimized adjustment of hardware controls like brightness and color temperature
- Push button calibration for 1-step profiling of industry leading monitors
- Laptop mode for better, more neutral laptop LCD profiles
- Luminance settings for matching multiple monitors to each other
- Ambient light measurement for verifying standard conditions
- Use at multiple workstations – no additional licensing fee
- Highest repeatability for consistent calibration and profiling results
- Highest sensitivity in dark areas for better control in shadow detail and more neutral gray scale



Eye-One Design

is an affordable, entry level color management system for creative professionals. With your Eye-One Pro you can obtain accurate color on all your displays and easily build profiles for your printers. And you'll be able to take full advantage of Eye-One Share software to measure, mix and share spot colors! You won't need to make excuses for color again.

- Profile monitors and printers
- Measure, mix and share spot colors and custom color palettes with the powerful Eye-One Share software
- Ambient light measurement for verifying standard conditions and for simulating colors for individually measured lighting conditions
- Easy-to-use, step-by-step software interface
- Laptop mode for better, more neutral laptop LCD profiles
- Luminance settings for matching multiple monitors to each other
- Easily upgrade functionality as your needs grow through software codes
- Upgradeable to full automation with Eye-One iO scanning table (available Fall 2005)



Eye-One Photo

is the most complete, full-scale color management system for photo professionals. With your Eye-One Pro you can measure and control color on displays, digital cameras, scanners, digital projectors and printers of all types. You can capture both flash and ambient light and easily measure spot colors. With Eye-One Photo you'll be in total control of your color throughout your digital photographic workflow!

- Profile monitors, scanners, printers, digital projectors and digital cameras
- Easy-to-use, step-by-step software interface
- RGB and CMYK Easy (small test chart)
- Laptop mode for better, more neutral laptop LCD profiles
- Luminance settings for matching multiple monitors to each other
- Measure flash and ambient light with the Eye-One Pro
- Adjust contrast, exposure, color saturation, shadows and highlights with Digital Camera module
- Profile editing with Eye-One Editor (available mid 2005)
- Measure, mix and share spot colors with Eye-One Share
- Upgradeable to full automation with Eye-One iO scanning table (available Fall 2005)



Eye-One Proof

is the ideal color management system for small prepress and print professionals. With your Eye-One Pro you can measure and control color on scanners, displays, digital projectors and printers of all types. It's not just for proofing! You can profile all of your RIP, printer, ink and media combinations for the best color every time. Easily measure spot colors and capture both flash and ambient light. Eye-One Proof features CMYK profiling for professional level color from your CMYK RIPs and printers. You can also create perceptual color profiles for RGB printers using the "easy" test chart, as well as the ability to edit your profiles with Eye-One Match Profile Editor.

- Profile monitors, scanners, printers and digital projectors
- Easy-to-use, step-by-step software interface
- CMYK and RGB Easy (small test chart)
- Laptop mode for better, more neutral laptop LCD profiles
- Luminance settings for matching multiple monitors to each other
- Flash and ambient light measurement for verifying standard conditions
- Profile editing with Eye-One Editor (available mid 2005)
- Measure, mix and share spotcolors with Eye-One Share
- Upgradeable to full automation with Eye-One iO scanning table (available Fall 2005)

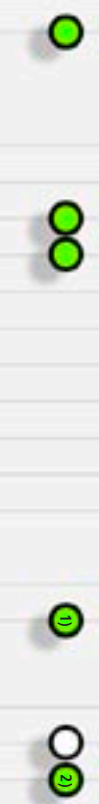


Eye-One XT

Eye-One XT Bundle does it all. With Eye-One XT you can handle just about any color management issue or problem that comes your way. You can measure and control color on digital cameras, scanners, displays and printers of all types – even projectors with the complete Eye-One Beamer kit included. Eye-One XT includes all test charts for your various printers, so no matter what, you've got the solution to match. You'll appreciate the comfort of having the extended warranty of three years, express replacement service if your unit needs repair, and a full one day training at one of our facilities. If you want the flexibility to handle any color situation, any time, then Eye-One XT is for you. Maximize the value of your Eye-One investment.

- Profile monitors, scanners, printers, projectors and digital cameras
- Easy-to-use, step-by-step software interface
- RGB and CMYK
- Laptop mode for better, more neutral laptop LCD profiles
- Luminance settings for matching multiple monitors to each other
- Ambient light measurement for verifying standard conditions
- Profile editing with Eye-One Editor (available mid 2005)
- Measure and share colors with Eye-One Share
- Eye-One iCare extended warranty for three year period
- One-day classroom training at designated facility
- Upgradeable to full automation with Eye-One iO scanning table (available Fall 2005)

- MEASUREMENT DEVICES**
 Accelerated Eye-One Pro
 Eye-One Display 2
- FUNCTIONALITY**
 Spot Mode Color Measurement
 Scan Mode Color Measurement
 Light Measurement
 Monitor profiling
 Scanner profiling
 RGB Easy (small test chart)
 RGB output profiling
 CMYK Easy (small test chart)
 CMYK output profiling
 Digital Camera profiling
 Digital Projector profiling
- Eye-One Editor for basic profile editing
 Eye-One Share to create, evaluate and communicate colors (including Color Picker functionality)
 iCare – extended warranty and service
 One Day Classroom Training
 Upgrade Voucher
- ACCESSORIES**
 Mini ColorChecker Chart
 ColorChecker SG for digital camera module
 Beamer Accessory Kit
 Easy to use ruler – for chart measurement in scan mode
 Eye-One iO Automated Scan Table for automated chart measurement
 Scan target, monitor holders and spot color guide



Eye-One Display 2

Eye-One Design



Eye-One Photo



Eye-One Proof



Eye-One XT



● included ○ optional

¹⁾ monitor only device, therefore no reflectance color measurement functionality together with Eye-One Share
²⁾ upgrade voucher to Eye-One Pro Solutions
³⁾ upgrade to Eye-One Match modules
⁴⁾ upgrade to ProfileMaker 5 solutions
⁵⁾ license flag for Editor module programmed on device, free software download upon shipment. (targeted for Mid 2005)



Greg Gorman, Photographer

Working with the Eye-One system, I am assured a complete color managed workflow from start to finish. From accurate monitor calibration to superb printer profiles, the Eye-One delivers the confidence I need in my digital photographic workflow. And now, being able to calibrate my digital projector with the Eye-One Beamer, I no longer have to worry about my on-screen imagery for my digital presentations. The Eye-One is a total solution for all of my color management needs!

www.greggormanphotography.com

One Device does it all

Eye-One Pro Spectrophotometer

Eye-One sets a new stage for speed and ease-of-use, putting leading edge technology in your hands.

The defacto industry standard Eye-One solutions just got better with super fast measurements, greater patch recognition and, of course, no waiting!

The new accelerated Eye-One spectrophotometer is not only optimized to read twice as fast, but is also outfitted with new Teflon® pads, creating a smoother gliding action. Together with Eye-One Match software, users click, swipe and read color targets almost instantaneously. Reading patches is fluid and effortless—with no pauses or hesitation at the end of rows.

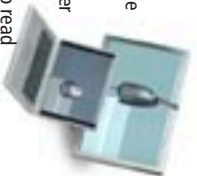
With the Eye-One Pro you can measure and control every color device in your workflow. Use it to profile a laptop, capture color from a fabric swatch or check your lighting conditions – it's all easy with your Eye-One!

Connected with just a USB power cord, Eye-One Pro can:

Profile – Monitors, Scanners, Printers, Digital Cameras and Digital Projectors
Measure and Capture – Spot Colors, Flash Light and Ambient Light

Eye-One iO Automated Scanning Table

If you plan on doing a lot of chart measuring, an Eye-One iO is a must have. This automated chart-reading table makes measuring color swatches hands-free and accurate. When it's docked with the iO, you're Eye-One is transformed into a tireless color measurement assistant to replace manual color measurement. And of course it will take full advantage of the accelerated speed of your Eye-One for the fastest chart measurements. (available Fall 2005)



Monitor Module

- Profile CRT LCD and Laptop Displays
- Easy and Advanced modes
- User definable luminance settings for better color agreement on multiple monitors
- Chromatic adaptation formula for a closer visual match of different monitors (or of different settings on one monitor) with different white points
- Gray balance optimization for more neutral and better defined grays
- Profile summary report ideal for post profile analysis
- Profile reminder to ensure true and reliable color over time
- Ambient light check procedure to determine optimal ambient light conditions for color critical work
- Push Button Calibration (PBC) for one-step profiling for industry leading monitors

Scanner Module

- Supports both reflective and transmissive targets (reflectance target included)

Printer Module

- Semi-automated scanning method for test charts – measure 300 patches in less than a minute with Eye-One Pro
- Supports all types of RGB and CMYK devices (when function is activated as indicated by package)
- Automatic detection of RGB or CMYK printer
- Print test charts directly from software application – no need to launch separate program
- Visual display of measured data provides instant feedback during measurement process
- Automated scanning method with Eye-One iO (available Fall 2005)
- Enables RGB Easy and CMYK Easy (small test chart) profiling in every package

Digital Projector Module

- Build an accurate on-screen profile in just a few minutes
- Designed for the creative, non-technical user
- Optional Beamer Holder provides more convenience

Digital Camera Module

- Create digital camera profiles for different photographic tasks.
- Easily create ICC camera profiles in Easy or Advanced Modes, with the ability to modify for contrast, exposure, color saturation and adjustments of shadows and highlights.

Profile Editor Module

- Edit profiles with the simple editing functions for the most popular editing needs (available mid 2005)



New "Small Test Chart" technology

With this new technology you can quickly and easily create a perceptual color profile by reading just a few rows of color swatches from a given output device. Within the Eye-One Match application, you simply print the small test chart named RGB Easy or CMYK Easy and then scan it in using your Eye-One.

How does it work?

This "small test chart" technology uses a revolutionary, patent-pending approach which combines an internal pre-linearization and creation of a virtual large test chart. We then apply the most sophisticated profiling techniques to fine tune the gray axis. The resulting profile is based solely on perceptual rendering – the ideal solution for entry level color management.

Share Colors with others

Every Eye-One package includes Eye-One Share – a complete color workshop on your desktop. It's the perfect creative tool for measuring single colors, mixing them, comparing them and converting them to any color scenario you can imagine.

With Eye-One Share you can easily:

- Create, evaluate and convert colors
- Click and measure any color (from a print, fabric, paint, anything)
- Mix and build color blends and tints
- Check to make sure that color will reproduce accurately
- Find the closest Pantone® color
- Access the complete digital Pantone® library
- Create custom color palettes
- Share the color with other users – coworkers, project team and clients
- Export the color as a palette to use in other applications

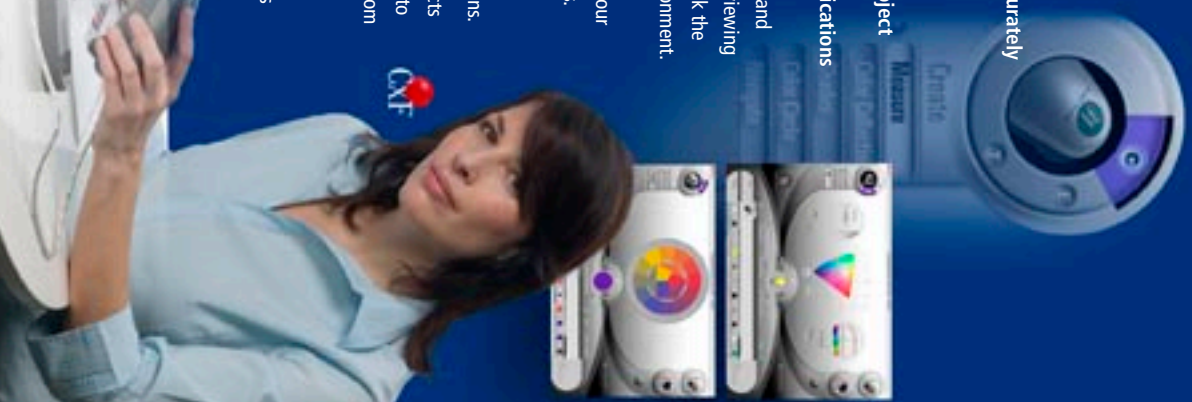
Eye-One Share is also where you can measure both flash and ambient light, build a lighting library and simulate color viewing under the different lighting conditions. You can even check the quality of the light in your light booth and working environment. It's perfect for creatives, because, not only is the entire

PANTONE™ library of colors included, but you can build your own custom color palettes from measured color swatches. You can create shades and blends of both the measured and existing library colors. You can even export standard color palettes for the major desktop publishing applications.

With its enhanced CxI capabilities, Eye-One Share connects all GretagMacheth software and hardware, enabling you to transfer your colors throughout the complete workflow from Creative to Prepress to Pressroom.

Whether you own an Eye-One or not, you and your clients can take advantage of many cool features of this FREE software – downloadable at 1.color.com.

Download your version today and check out the FREE training module about Eye-One Share found in the Color Knowledge section of 1.color.com.



Services and Training

Eye-One iCare



Your Eye-One deserves care and attention.

For extended coverage and complete service, upgrade your standard GretagMacheth warranty to a three-year extended warranty. As part of the iCare package you'll also get Express Replacement

which guarantees next-day replacement of your Eye-One hardware. You also receive:

- Accidental damage protection
- A custom Eye-One carrying case
- Free annual accuracy verification
- 10% off all GretagMacheth classroom or on-site training programs



Training Classes

Eye-One is the easiest to use color management system on the market. But, when you need training on how to implement color management into your entire digital workflow, attend one of our regularly scheduled hands-on training workshops, offered through our professional services business unit – the Graphic Intelligence Agency. Customized training, output profiling and workflow integration services are also available on-site at your location, worldwide.

Visit the gretagmacheth.com website for more details.



Vincent Versace, Photographer

Color is the backbone of my art. If my color is not right, then what I saw is not being conveyed. The beauty of the Eye-One system is that, across the board, I can get accurate color on my monitors, scanners, printers and digital projectors.

The elegant interface is so easy to use and is the same for Eye-One Display 2, which I carry with me everywhere I go!

www.vincentphoto.com



Katrin Eismann, Artist, Author, Educator

The confidence of working with a color calibrated monitor and proofed printers simply cannot be underestimated. Everyday, I have to rely on my equipment to make creative decisions. For me, the GretagMacheth Eye-One is the difference between wishful thinking and the full confidence that what I am seeing is what is going to print.

www.katrineismann.com
www.photostopdiva.com

Eye-One Components

Every Eye-One solution includes a selection of hardware, software and accessories. Here's an explanation of what they are:



Hardware

Eye-One Display 2 – a colorimeter designed for profiling of CRT LCD and laptop displays. Also measures ambient light.



New Accelerated Eye-One Pro Spectrophotometer – optimized to read twice as fast, plus new Teflon® padded feet for smooth gliding action. A 10 nm optical resolution instrument used to measure and profile any device, plus measure spot colors and flash/ambient light.



Software

Eye-One Match – Profile creation software:

- Monitors • Scanners • Printers • Digital Projectors • Digital Cameras



Eye-One Share – Build and communicate custom color palettes and capture spot color and light (ambient and flash)

Eye-One Editor – Basic profile editing software (available mid 2005)



Extended warranty

Eye-One iCare – extended warranty bundle for 3 years coverage



Accessories

Chart measurement ruler – Easy-to-use manual strip reader tool included with all Eye-One Pro solutions



Beamer Accessory Kit – Eye-One holder and carrying case for projector profiling



Eye-One 10 Automated Scanning Table – For automated hands-off chart measuring. iO will take full advantage of the enhanced speed of the new Eye-One Pro device for the fastest measurements! (available fall 2005)



Eye-One Pro Accessories –

- Spot measurement holder
- Monitor holders (CRT & LCD)
- Ambient light measurement head



Digital ColorChecker SG and Mini ColorChecker color reference charts

Related Products

When you need even more robust color management capabilities such as advanced measurement devices, automation, custom measuring and comparing, press profiling, custom target creation or other special needs, then consider upgrading to GretagMacheth ProfileMaker software solutions and other spectrophotometer options that offer different levels of flexibility and automation.

PMS Photostudio

for the studio photographer

PMS Publish

for publishing

PMS Publish Plus

for multi-color publishing

Other spectrophotometers:

iColor – automated spectral chart reader
SpectroIno/Spectroscan – highest level of automation and flexibility

ColorChecker Charts

Professional photographers rely on GretagMacheth ColorChecker® brand test targets to ensure accurate color reproduction.

ColorChecker Standard – original 24 patch

Mini ColorChecker – pocket size version of original
Custom White Balance – for accurate white reproduction

3-Step Gray Scale – for balancing images

Digital ColorChecker SG – optimized for digital camera profiling (required to create profiles with Eye-One Match and ProfileMaker Digital Camera module)



Eye-One Pro device

Spectral measurement device: supported measurement modes:	Reflectance single measurement Reflectance scanning measurement with automatic patch detection Emission: radiance measurement (monitor measurement) Emission: irradiance measurement (light measurement)
Spectral analyzer:	Holographic diffraction grating with 128 pixel diode array
Optical resolution:	10nm
Physical sampling interval:	3.5nm
Spectral data:	Range: 380 ... 730 nm in 10nm steps
Measurement aperture:	4.5 mm diameter
Interface:	USB 1.1
Physical dimensions:	Length 151 mm, width 66mm, height 67 mm (6 x 2,6 x 2,6 inches)
Weight:	185 g (6.5 oz)
Accessories included:	Calibration plate, USB cable, CRT monitor holder, flat panel holder, positioning target, scanning ruler, and light measurement head
Measurement geometry:	45°/0° ring illumination optics, DIN 5033
Light source:	Gas filled tungsten (Type A)
Physical filters:	No or UV cut (filters not exchangeable)
Inter-instrument agreement:	Average DE*94 0.4, max. DE*94 1.0 (Deviation from GretagMachbeth manufacturing standard at 23°C for single measurement mode on 12 BCRA tiles (D50,2°) DE*94 ≤ 0.1 (D50,2°) with respect to the mean CIE Lab value of 10 measurements every 3 seconds on white
Short-term repeatability:	Spectral radiance (mW/m/m2 /sr); Luminance Y (cd/m2) 0.2 ... 300 cd/m2 x,y: +/- 0.002, typical (CRT 5000°K, 80 cd/m2)
Data format:	Cosine-corrected diffuse light measurement head 6,0 mm
Type:	Spectral irradiance (mW/nm/m2), Illuminance Y (lux)
Diameter:	
Data format:	
Power supply:	Device powered by USB. No additional charger or battery required. USB 1.1 high power device.

Switzerland:	t: +41 44 842 24 00, f: +41 44 842 22 22
United States:	t: +1 845 565 7660, f: +1 845 561 0267
Germany:	t: +49 61 0279 570, f: +49 61 0279 5757
United Kingdom:	t: +44 1928 280050, f: +44 1928 280080
Italy:	t: +39 0574 527755, f: +39 0574 527671
France:	t: +33 161 062 180, f: +33 134 620 947
Russia:	t: +7 095 502 92 65 f: +7 095 502 92 67
China (Hong Kong):	t: +852 2368 7738, f: +852 2368 6717
China (Shanghai):	t: +86 21 62676180 f: +86 21 62676832

Visit our World Wide Web Sites at www.itcolor.com and www.gretagmachedt.com
™ Trademark of GretagMachbeth. GretagMachbeth is an ISO 9001 certified company. Part. No. 42.01.39 (05/05).

© 2005, Amnays Holding AG. All rights reserved.

Eye-One Display 2 device

Interface Type:	Three channel colorimetric sensor
Interface:	USB data and power supply
Data format:	Luminance (cd/m2), chromaticity coord. x, y (CIE 1931)
Refresh rate:	Monitor frequencies: 40 Hz to 150 Hz
Physical dimensions:	Length 84mm, width 64mm, height 35mm
Weight:	Measurement device 131 g, counter weight 33 g
Measurement range:	Luminance: Black point: 0.02 cd/m2 White point: 3,000 cd/m2
Accuracy:	Illuminance: Suitable for use in Graphic Display Proofing per ISO/CD 12646 Standard With respect to Eye-One Pro on reference monitor (white 6500 K, chromaticity coord. x,y: +/-0.004 at Y=75 cd/m2 (white 6500 K) Luminance 0.3% at Y=75 cd/m2 (white 6500K) Chromaticity coord. x,y < +/-0.001 at Y=75 cd/m2 (white 6500K)
Short-term repeatability:	Power Required: Powered by USB, no additional charger required USB low power class device
Power conditions:	

System Requirements

Eye-One Match, Eye-One Share:

- Macintosh®
 - Any Macintosh® with USB support
 - Mac OS X v10.2 or later
 - 128 MB of available RAM
 - 80 MB of available hard disk space
 - Monitor resolution of 1024 x 768 pixels or higher
- Windows®
 - Windows® 2000, XP
 - 128 MB of available RAM
 - 80 MB of available hard disk space
 - Monitor resolution of 1024 x 768 pixels or higher
 - USB Support



Seth Resnick, Photographer

As professional photographers transition from film to digital, color management shifts from being an option to a necessity. Responsibility for accurate color has shifted from the client to the photographer. Without color management you simply have nothing. GretagMachbeth provides the tools so that a photographer today can maintain consistent and accurate color with an easy-to-use interface. I incorporate GretagMachbeth solutions into all aspects of my workflow: profiling monitors, creating paper profiles and for calibrating my LCD projectors. Quite simply, my entire workflow begins with GretagMachbeth's Eye-One.

www.sethresnick.com

Apple, Mac, the Mac logo, Macintosh and ColorSync are trademarks of Apple Computer, Inc., registered in the US and other countries. Pentium is a registered trademark of Intel Corporation. Microsoft and Windows are registered trademarks of Microsoft Corporation. PANTONE® and other Pantone Incorporated trademarks are the property of Pantone, Inc. All other trademarks are the property of their respective owners.

gretagmachedt
YOUR COLOR. PRECISELY.